

“Wowee” a term used by football commentator Brian Taylor, could well be used to sum up the last couple years in the red meat industry. This time last year saw some uncertain times and there’s certainly been some challenges since but, I think we could all generally say that we are extremely lucky to live where we do, in regional areas. At the current time the Eastern states Trade Lamb Indicator is \$2.70 up on the same time last year!! It’s also great to see the next generation taking an interest in the land, on many farms around the district. Working and associating with younger people keeps one on the go. Let’s hope the trend continues and it would be great to see the average age of the Aussie farmer start to drop.

We have just completed the first round of our lamb marking as this goes to print and survival has been exceptionally good so far, in some of the worst weather we have seen for a few years. The maternal ewes have been exceptionally good mothers and the good survival rates in their lambs is a testament to this. Our ICON Southies and Poll Dorsets have done a good job too and are getting increasingly better each year as we apply some pressure on ewes that fail to rear lambs.

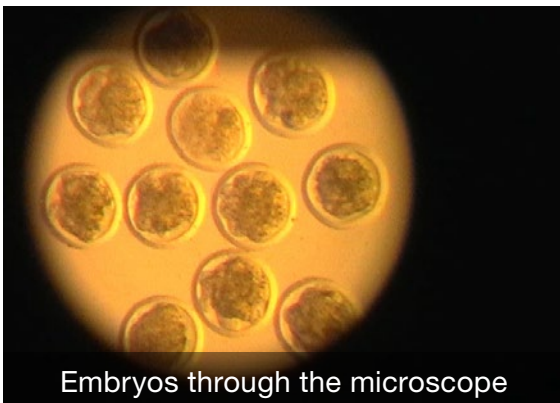
In Summary

Out of 4,200 lambs born in July/August main drop
Survival from birth to marking as follows
Maternals 87.1%
Terminals 69.2%

In late February earlier this year we undertook the largest embryo transfer ever here at Chrome. Flushing a total of 29 of our very best ewes and mated to the best proven sires and up and coming young rams, we yielded a total of 277 Elite embryos. The Recipient ewes of the embryos were commercial Chromedale ewes and lambed in some of the worst weather with a 91.1% survival rate. Can’t wait to see them at weaning!!

Why ET?

By utilizing our own proven elite stud ewes and the very best of our own rams as well as outside genetics like, Gooramma 18.404 and his Sire Gooramma “Guru” 16.308 (Poll Dorsets) and Southdown genetics from New Zealand (which are no longer importable into Australia), we maximise the chance of breeding ourselves elite stud rams and ewes which then flow on to benefit our clients down the track. It gives great selection power when you might potentially get 4-5 ram lambs that are full ET brothers to pick from.



Embryos through the microscope



Flushing of the embryos

(Photos supplied by Genstock Australia)

SIRES WITH PROGENY IN 2021 SALE

Inspection Day – Monday 4th Oct

Our inspection day will be held on Monday 4th October for people wanting to view the sale rams prior to the sale. All sale rams will be lotted and penned as per ram sale day.

The VFF has advised that on-property sales will be able to go ahead within the relevant COVID rules, however the open day may be affected if we are in lockdown. We will notify clients through our social media and website closer to the date.

On-Property at Chrome & Online with Elite

After last October's ram sale breaking the ice for us in the online auction world, you will now see it as a standard addition to our ram sales. Therefore, we will be having an on-property auction on Thursday 7th October simultaneously live stream audio & video on Elite Livestock Auctions. Along with the catalogue, which you will be able to access on our website mid-September, there will be photos/videos of each ram individually catalogued for the sale available on Elite Livestock.



If you are considering bidding online, please register with Elite Livestock Auctions prior to the day if possible, bidding details can be found in our catalogue. Agent rebates will remain the same at 3% for those agents' introducing clients prior to the sale. Settlement of accounts will be still done through selling agents Kerr and Co Hamilton.

While we must work within any COVID-19 restrictions, we will endeavor to provide our clients with all the help and support they need. If you have any questions or concerns about purchasing rams this year, please don't hesitate to contact Matt or talk to your agent.



Gooramma 18.404

(Photo supplied by Gooramma Poll Dorset Stud)



Chrome 17.1216

The progeny of Gooramma 18.404 who was purchased at the 2019 Gooramma on property sale for \$10,000 have really been impressive. Several his sons have already been used as stud sires. His sons will feature in the lead pens of the Poll Dorset offering this year.

2021 Ram Sale COVID-19 Protocols

As we have seen, things can change quickly, so our on-property ram sale is planned to go ahead on Thursday 7th October but depending on COVID-19 guidelines at the time we may be required to take additional steps to ensure everyone's health and safety.

Attendance – if in lockdown we will unfortunately have to restrict attendance to interested buyers and stock agents only. However, if there are no restrictions, we would love to welcome back all visitors as we have done so in previous years. Please manage the risk of exposure through hygiene measures and physical distancing.

Attendance Register – all those attending must fill out an attendance register or use our QR code.

Delivery – As in the past, we will be offering free delivery to most destinations including SE South Australia, Southern NSW, and Tasmania. With border shutdowns rams may need to be transported via commercial transport, in which case we disinfect decks prior to loading to minimize animal health risks.

ICON RESERVE RAMS



ICON Poll Dorset 20.1275 Reserve Ram



ICON Southie 20.308 Reserve Ram

Icon Southies

- The real deal for ewe lambs and early maturing Prime lambs

In 2013 after feeling the need to produce a terminal sire for ewe lambs and merino ewes, we commenced the ICON Southie program. The old saying “the proof is in the pudding” couldn’t be more relevant in reference to the performance and results our clients are getting by using ICON Southies. We continually get texts with photos and little stories throughout the year praising the performance of these rams. Whilst mating of ewe lambs is not for everyone, those that do want a trouble-free run, by concentrating on moderate birth weights and fine smooth shoulders the ICON Southies are delivering great results in this area.

Most producers generally mate their ewe lambs after their main joining time, and this is where the ICON Southies have really excelled themselves. Their early maturing, easy doing attributes, tight skins and great butt shape turn them into a very marketable item fast. If the product doesn’t work then the clients won’t come back and whilst we are increasing quantity at our end, we have still struggled to keep up the supply. A sign of a good product.



Utilizing the “ram effect”

Considering using vasectomized rams to incite your ewes natural breeding cycle? The “ram effect”, (using teasers which look, act and smell like a ram but no longer fertile) is enough to increase the luteinizing hormone which triggers ovulation. This allows your ewes to synchronize which in turn provides for a shorter lambing period. By placing teasers in with the ewes 14 days prior to putting your breeding rams out can help maximize your conception rates. This is most effective for mating ewe lambs and 1.5 yo ewes having their first lamb. A 90% conception from a 3-week joining is very achievable from 2yo+ ewes.

As part of our service to our clients, we offer a limited number of vasectomized rams. Booking your interest early is essential as a 4–6-week gap between the vasectomy and using the teasers needs to be allowed for. The other option is to leave a few of your own maternal wether lambs entire and get them vasectomized by a vet, although these may not be as effective the first year. We have a basic template for a three-week joining here, using teasers and lupins if anyone wants one. Just flick us an email or a text.

CHROME GENETICS EWE SALE

The annual Chrome Genetic Ewe sale is scheduled for the second week of December on Auctions Plus. Entries are open to all Chrome clients who have surplus commercial ewes. Last December we saw our biggest maternal ewe sale yet with just over 3,800 ewes. You can be involved in this sale using your agent of choice, the sheep just need to be assessed by an accredited Auctions Plus assessor. If you are interested, please give Matt a call. We recommend the use of our Chrome Genetics logo as your first photo as we get enquiries for Chrome blood ewes, and the logo directs these buyers to your product.

For clients selling online outside of this sale we encourage you to let us know as we can promote your offering through our social medias.



CLIENT CORNER



Extract from the Stock & Land Sheep Compendium July 2021

By Kylie Nicholls

Craig & Jacinta Grant, Pidgeon Ponds, Vic

IMPROVING LAMB SURVIVAL

For Pigeon Ponds prime lamb producer Craig Grant, making the change to a maternal composite flock has boosted lamb survival rates by more than 40 per cent and improved overall ewe resilience and hardiness.

Mr. Grant, his wife Jacinta, and their family run a self-replacing flock of 5500 composite ewes across two properties in southwest Victoria and have been using Chromedale rams since Chrome Sheep Studs began 16 years ago. They also own the Lindsay Murray Grey stud, joining about 160 cows each year. “Originally we ran fine wool Merinos and as the meat industry became more appealing, we moved into first-cross ewes,” Mr. Grant said.

“We then decided to trial the Tonissen’s Chromedale rams over our first-cross ewe base so we could start to self-replace our own sheep rather than having to buy in ewes each year.

“We kept all the Chromedale-cross ewe lambs and very quickly worked out how maternal and productive they were.”

Now they join two-thirds of their composite flock to Chromedale maternal rams to supply replacement breeders, while the two oldest age groups of ewes are mated to terminal Poll Dorset sires, also sourced from the Tonissen family.

“At the end of the day the result that did it for me the most was that we knew we were scanning 120 per cent in lamb in our Merinos, but still only marking 70pc of lambs,” Mr. Grant said.

“The first-cross ewes were better but there was still a real fall out of potential fetuses that we weren’t bringing back to the lamb marking cradle.

“Once we started getting into the composite sheep, we were scanning 140 to 145pc and still marking 125 to 130pc, that lamb survival is critical, and all adds up to how tough and robust they are.” This season, the maiden ewes have pregnancy scanned at 145pc and the adult ewes at between 150 to 168pc, with their lambs just starting to hit the ground now.

The Grants have established a strong market for their composite ewe lamb replacement breeders, which are keenly sought by repeat buyers.

They keep about 2000 ewe lambs each year, with half retained in their flock and the remainder sold through the Chrome Genetics Maternal ewe sale in December and a special ewe sale at Casterton, Vic, in January, topping this year’s market at \$350/head.

Mr. Grant said they aim to sell most of the wether lambs over the hooks by December at a dressed carcass weight of 22 to 24 kilograms. Some lambs are also kept to finish on summer crops.

“The carcass merit of the maternal composite sheep is getting better all the time,” he said.

“Not only are we getting bang for our buck from the maternal side, the wether lamb portion is also becoming a high value product as well, a lot of the lambs we feed on are extremely good doers and yielding very well for us. “We recently hooked lambs that dressed very close to 50pc and killed at the top end of the Safeway specifications and still made more than \$200/hd in May.”

Mr. Grant uses a combination of visual appraisal and Australian Sheep Breeding Values for his ram selection, with an emphasis on fertility, moderate growth, positive muscle, and neutral fat. Structural soundness and a tight skin type is also important.

“What attracts me to Chrome is their consistent uniformity of type, when we’re selling our ewes or putting together lines of lambs to get that consistency of type definitely adds market appeal,” he said.

“I think the type of sheep we have now are just so much more robust and their maternal attributes, doing-ability and toughness is what I really enjoy about them.

“They are rewarding sheep to own as they give you back so much of what you put into them.”



Another top line of the Grant family's 1.5yo Chromedale ewes

CONTACT



Matthew & Tanya Tonissen

PO Box 95, Hamilton, Vic, 3300

Mobile 0417 149 805

Email office@chromesheepstuds.com.au



Chromedale® • Perendale • Coopworth • ICON Poll Dorset • ICON Southie®

OPEN DAY

Monday 4th October 11am – 4pm

SPRING RAM SALE

Thursday 7th October

Inspection 9.30am Sale commences 11.30am

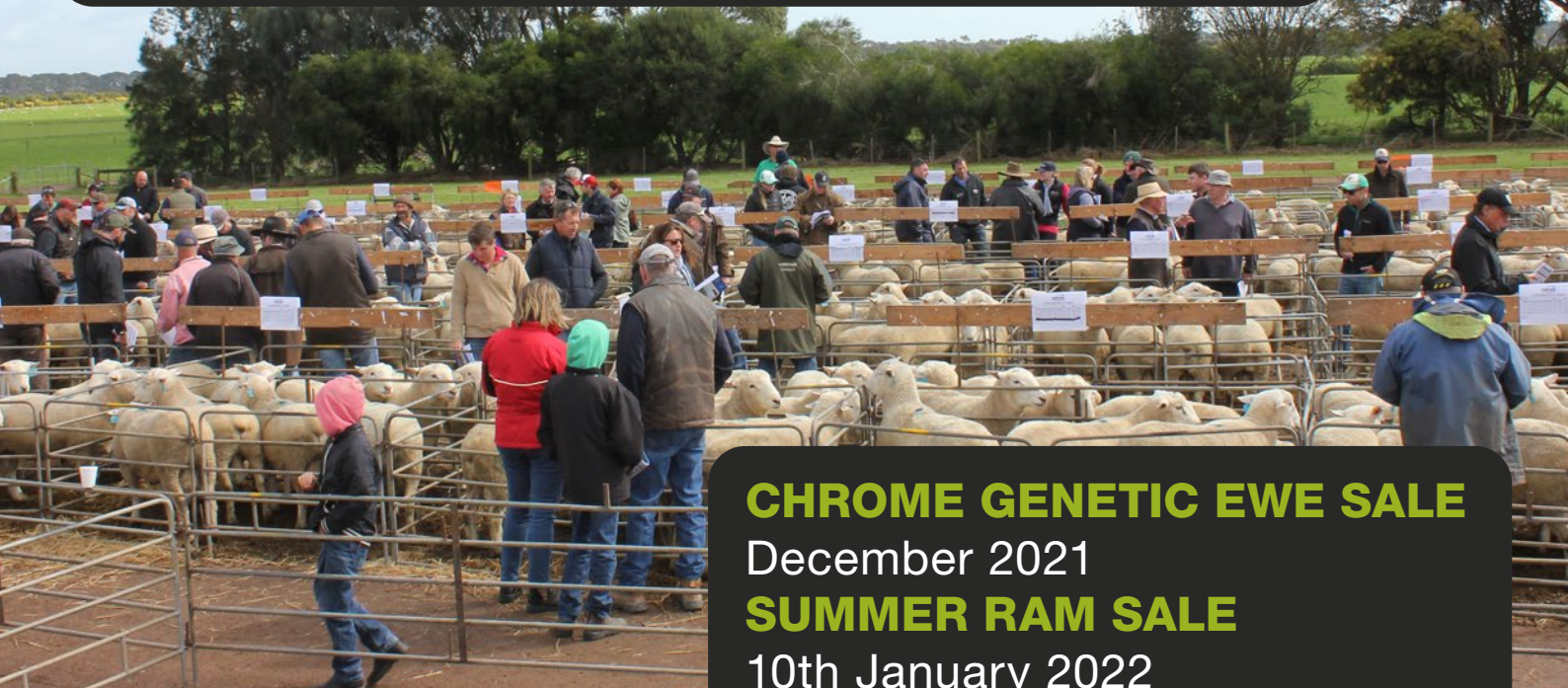


Ram sale catalogue will be available on our website in PDF and Excel formats. If you would like a catalogue posted, please email us.



On-Property
& ONLINE

EVERY 6TH
RAM
FREE



CHROME GENETIC EWE SALE

December 2021

SUMMER RAM SALE

10th January 2022



Robert Claffey 0418 625 839

www.chromesheepstuds.com.au